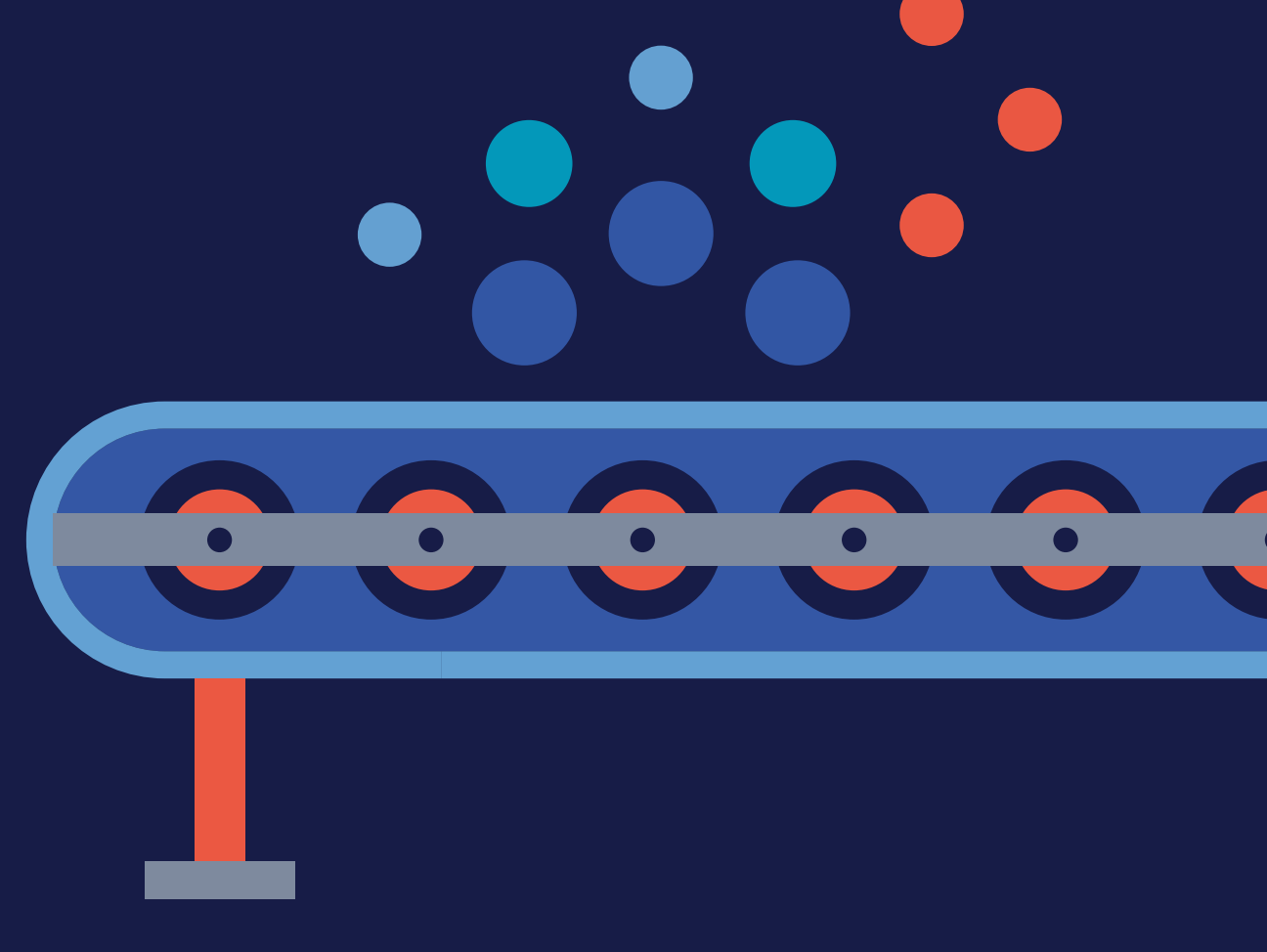




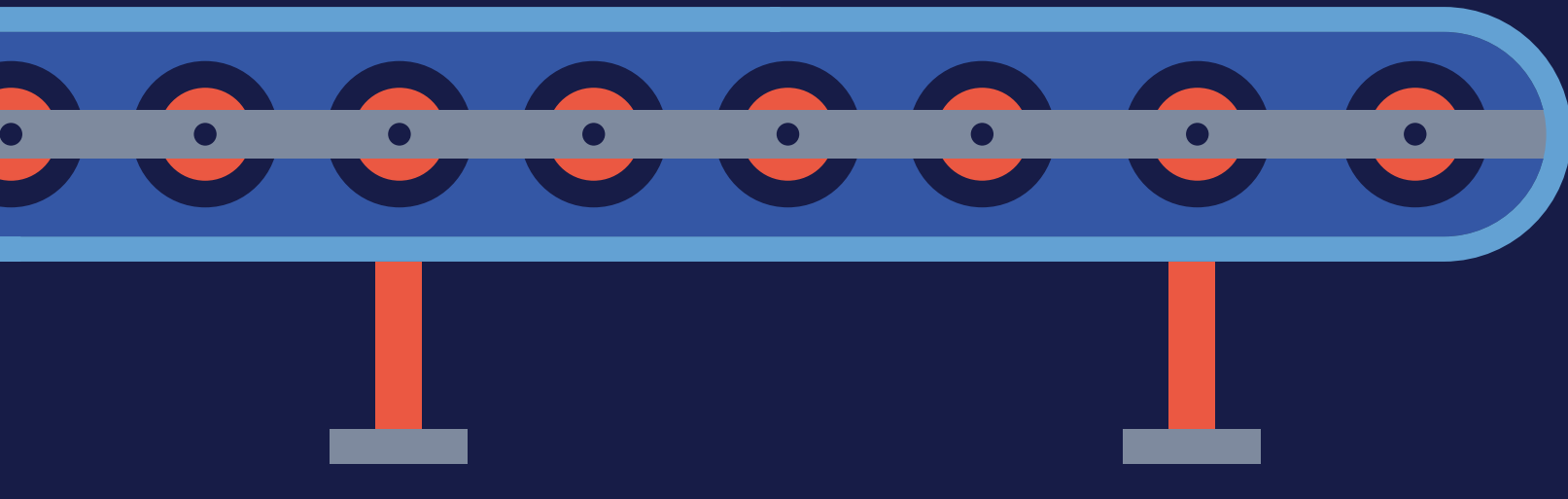
# Quality starts with control

At ChromaScape, we have controls in place at every stage of our process — from purchasing raw pigment to manufacturing to shipping — to ensure our customers always receive a quality product they can trust.



Here's how we do it.

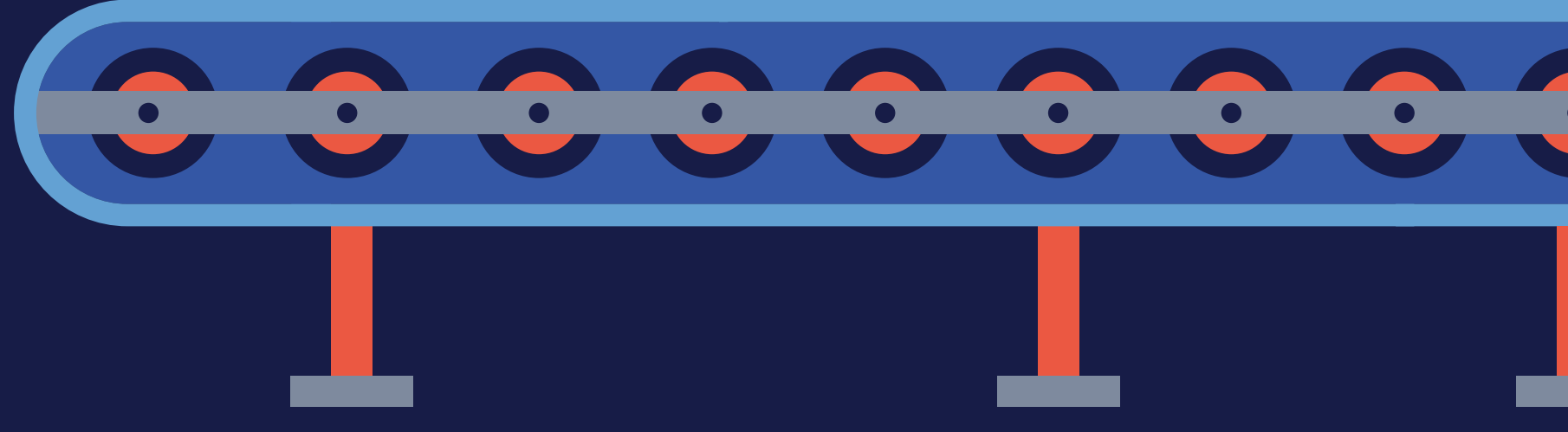
## Raw materials



- We only purchase from suppliers we know and trust, not spot deals that put our savings over your quality.
- We demand a Certificate of Analysis (COA) from our suppliers, ensuring all raw material is within spec and meets our requirements.

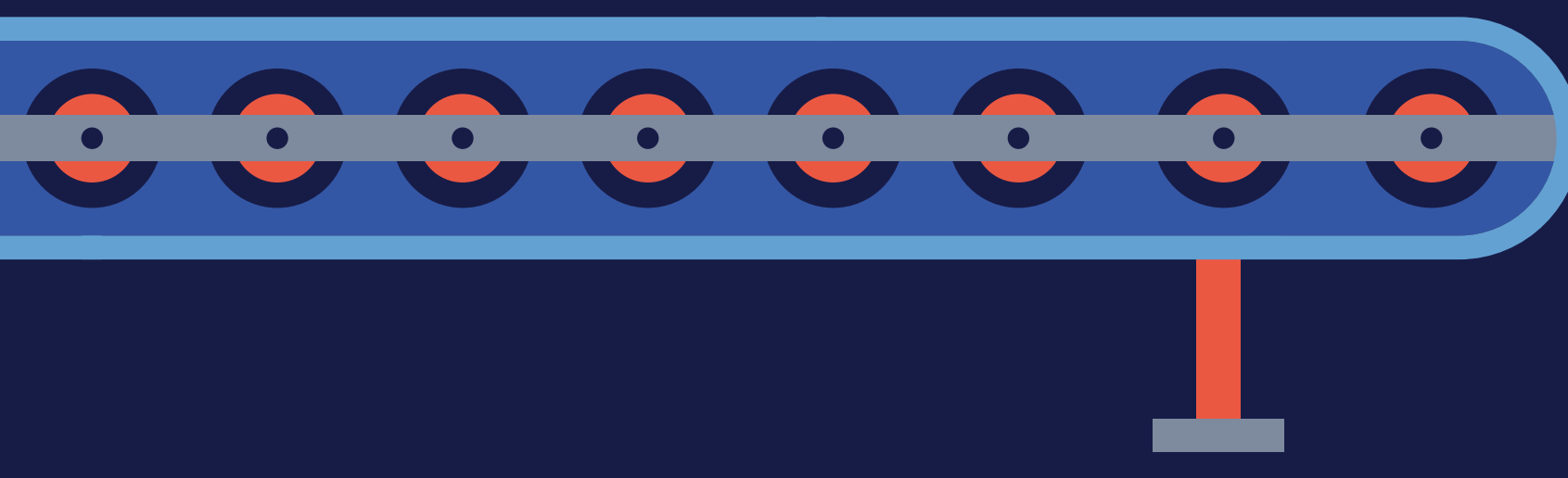


## Manufacturing Process



- We follow ISO 9001 guidelines, an internationally recognized standard for developing quality management systems.
- We have organized our manufacturing process around defined, repeatable and data-driven practices to ensure consistent quality.

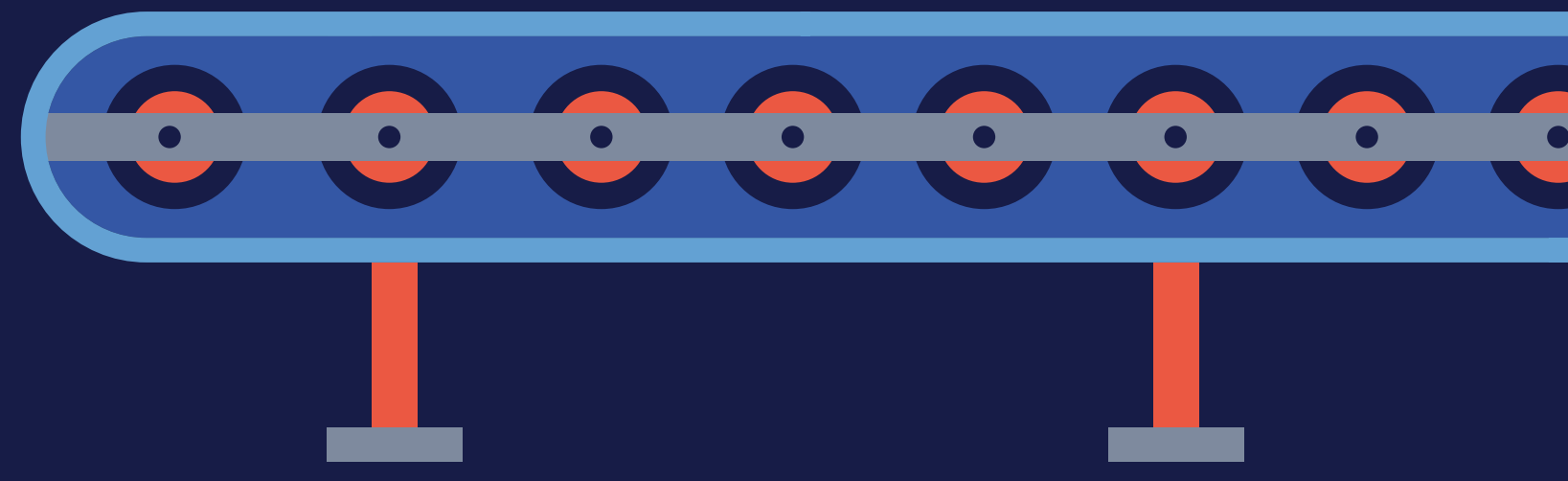
## Quality Testing



- We test every batch of products before they leave our facility to ensure every shipment has met all specifications.
- We retain colorant from every batch we create so we can quickly test and resolve any issues that may arise.



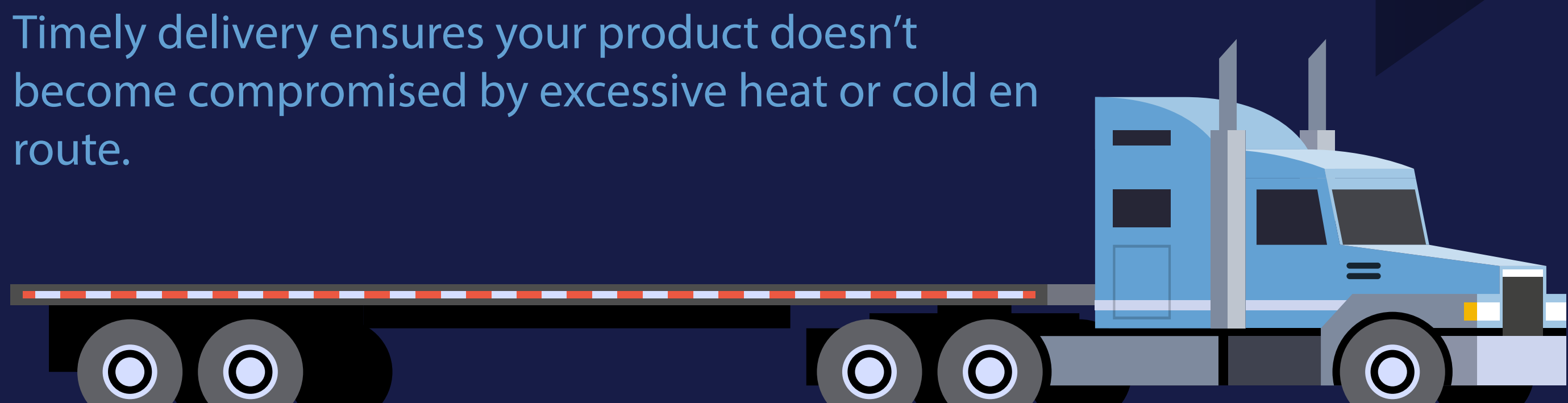
## Packaging



- We only use new totes to ensure there is no leftover residue that could compromise the product.
- New totes mean all valves are in proper working order to save you time on-site.

## Shipping

- We always stock enough product to cut delivery times to an average of just 24 hours.
- Timely delivery ensures your product doesn't become compromised by excessive heat or cold en route.



For a quality product you can trust, contact ChromaScape today or request a sample of our colorant.

CHR•••••MASCAPE